



Varden Living Walls Vertical Farms Vertical Gardens

Hardware configurations and accessories for commercial, greenhouse and consumer use



[Visit Our YouTube Channel](#)

The **Varden** System offers traditional Living Walls attached to buildings, inside or outside.
Grow ornamental plants or edible greens and herbs, in 2 styles of trays.



Excellent plant
health in any
service
application



All **Varden** Living Walls Utilize Standard Components In Every Project:

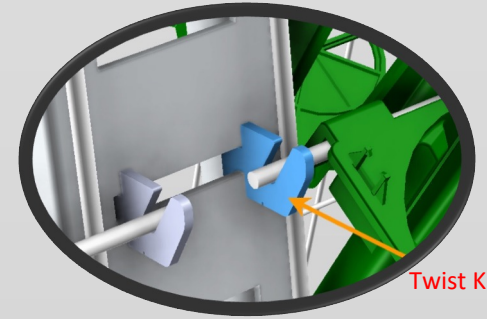
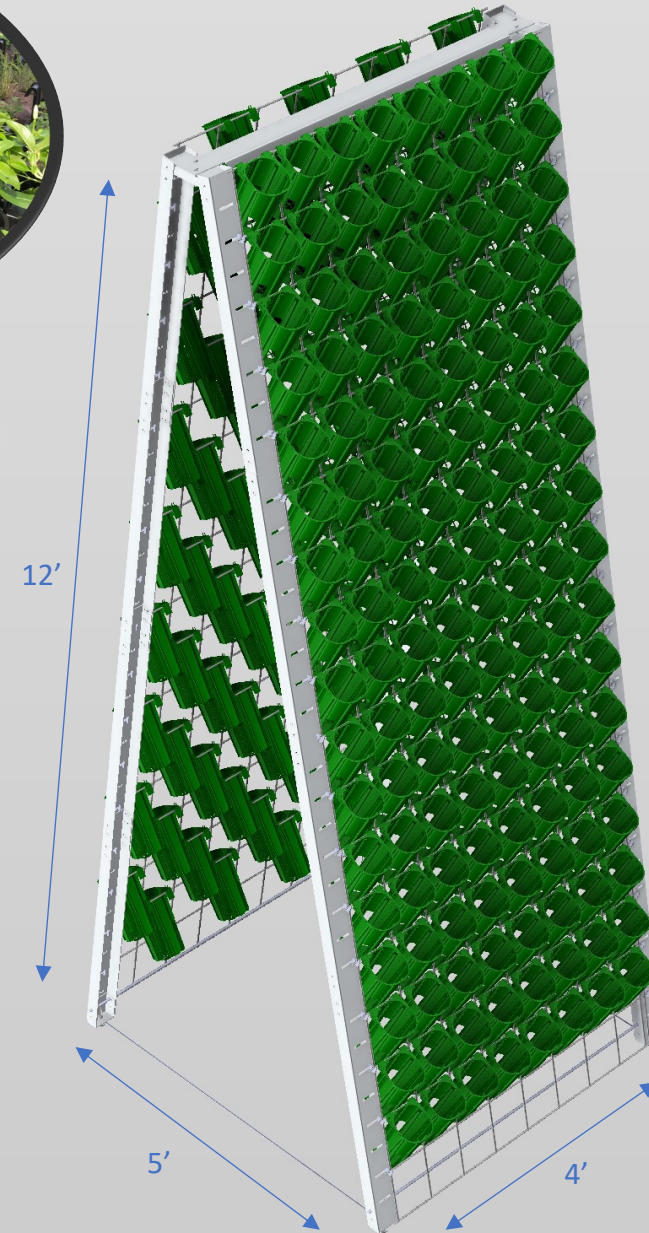
Trays or Sleeves, Vardensok or Ellepots, Structural Wire, Mounting Hardware, Irrigation and Plant Material





12' A-Frame Section:

- Each A-Frame provides 96 sf of plantable area on 5' x 4' (20 sf) of floor space. Couple sections together to create rows of any length. Height variable in 3' increments to 12' max.
- Includes all parts listed to assemble one 12' x 4' wide A-Frame section, irrigation lines, Varden Sleeves and 100mm Ellepots at 100% coverage. (272 Sleeves)
- All components ship densely on standard 40" x 48" wood pallets.





6' Rolling A-frame



Development of new hardware parts and configurations for the greenhouse and vertical farming markets has provided new options for all markets we serve.

Greenhouse system parts have been economically scaled down for use in commercial living wall, consumer vertical garden and grocery display markets allowing greenhouse propagation and rotation into holders for finishing and harvesting at time of need.



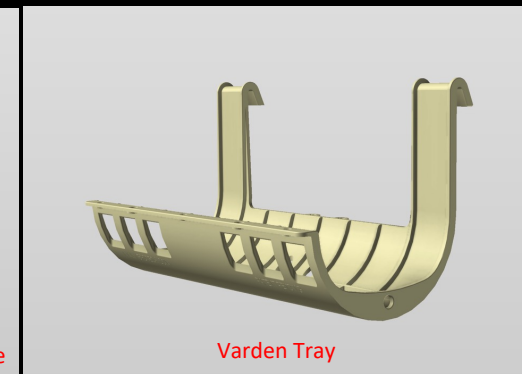
Lettuce



A-Frame with Herbs



Varden Sleeve



Varden Tray

Rolling A-Frame:

- Each A-Frame provides 48 sf of plantable area on 4' x 4' (16 sf) of floor space. Create a self-contained rolling garden or display anywhere.
- Includes all parts shown to assemble one 6' x 4' wide A-Frame section with irrigation lines and 88 Varden Trays or 160 Sleeves on both sides.
- All components ship on standard 40" x 48" wood pallets.



Mounting bars for grow lighting and drip pan as accessories.

Lights and pumps on request.

Media carriers included and style must be selected based on usage.



Leaning Garden:

- Each assembly provides 24 sf of plantable area on 4' x 1' (4 sf) of floor space. Create a patio garden or display anywhere.
- Includes all parts shown to assemble one 6' x 4' wide section with irrigation lines and 44 Varden Trays holding 1 Vardensok or Ellepot Pouch each. Planted at 3 plugs per, will hold up to 132 plants at 100% coverage. Option to Cover with 80 Sleeves at one deep rooted plant per sleeve.
- All components ship boxed on standard 40" x 48" wood pallets.



Wall Bracket



Levelling Foot



Mounting bars for grow lighting and basin not included.

Lights and pumps not included.

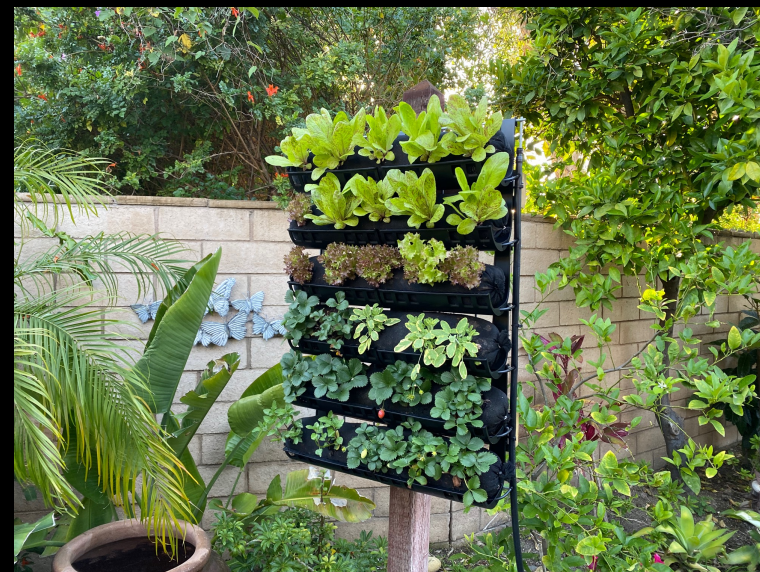
Media carriers included and style must be selected based on usage.





Our 6 sf Varden Kits are built for simplicity with meaningful plant capacity and functionality with ornamental or edible plants.

Growing from seed/plug or sustaining “ready-to-harvest” plants delivered on a replenishment schedule keeps customers harvesting fresh greens and herbs all year long.



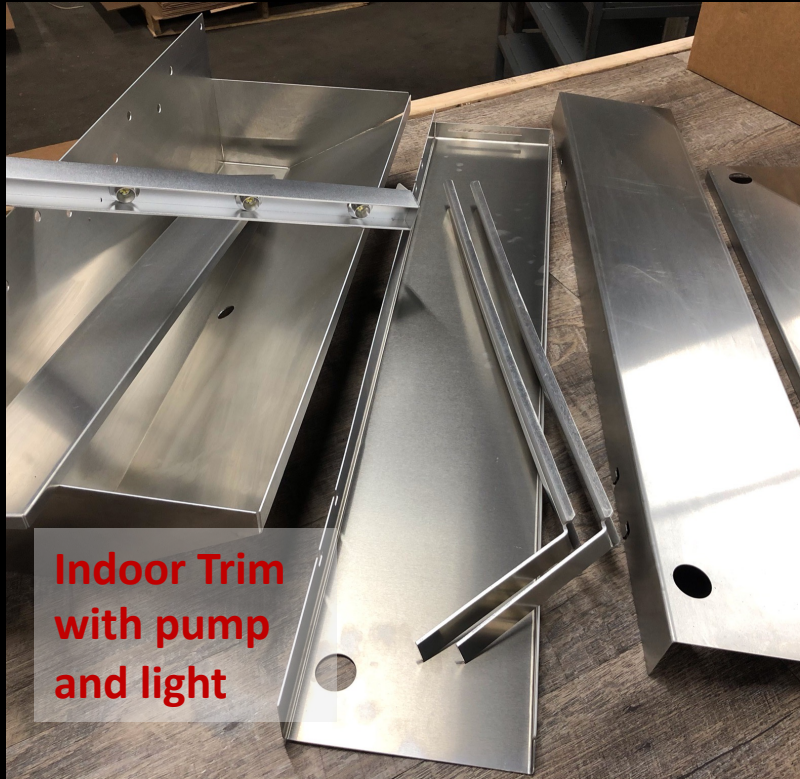


The Indoor Varden Kit:

The 2' x 3' kit delivers in a custom box at 10" deep and weighs 36 lbs. with all parts, surround trim, pump, lighting, mounting hardware, irrigation, empty mesh and filler tube included. See dedicated website at www.verticalgardensupply.com.



The **Varden** Indoor Kit is perfect for creating kitchen gardens for year-round supply of fresh herbs and greens plus it's a beautiful home addition.





The Outdoor Varden Kit:

The 2' x 3' kit delivers in a custom box at 8" deep and weighs 20 lbs. with all parts, mounting hardware, irrigation, empty mesh and filler tube included. See dedicated website at www.verticalgardensupply.com.

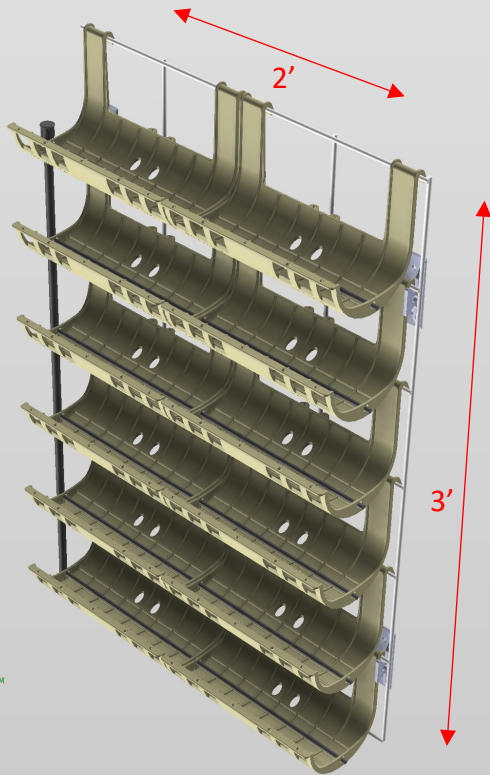


Assembled 2' x 3' Vertical Garden

Holds up to 36
plants per unit

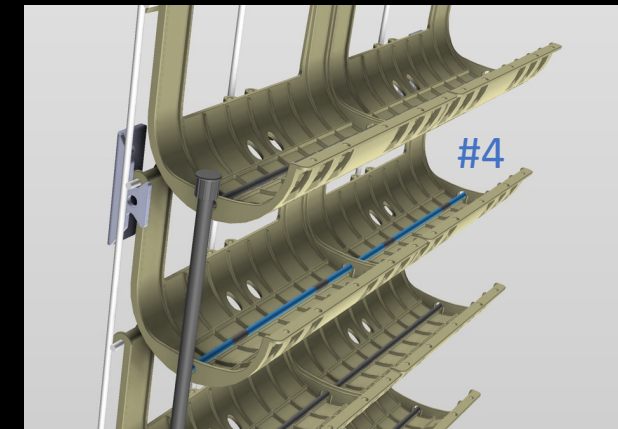
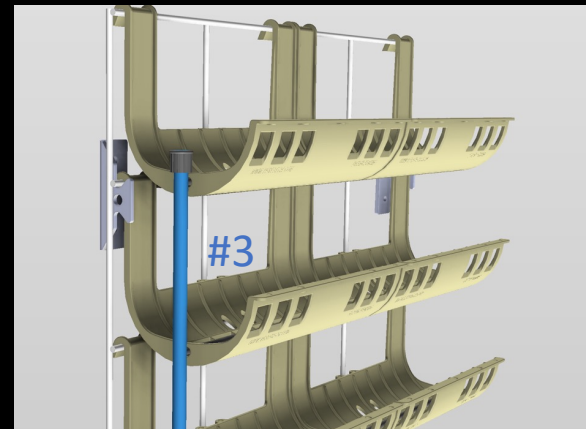
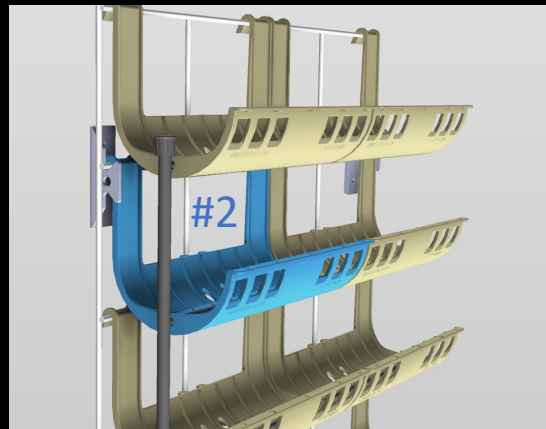
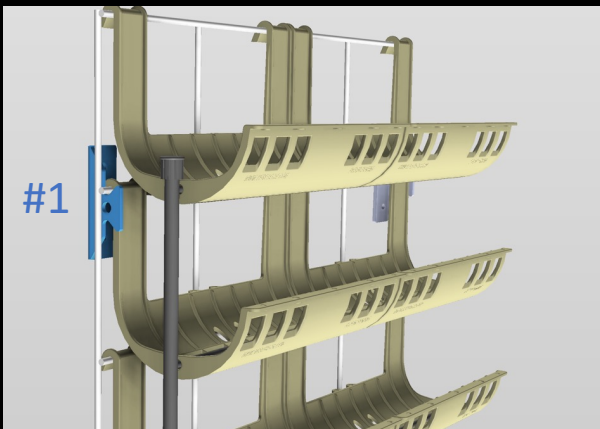


(filled Vardensok and Ellepots sold separately)



Contents of the Outdoor Varden Kit:

1. Uni-directional mounting clips – 4 ea. (pic #1)
2. Varden trays to cover 6 sf area – 12 ea. (pic #2)
3. 5' of irrigation supply line – 1 ea. (pic #3)
4. 3' drip irrigation lines for each row of trays – 6 ea. (pic #4)
5. 2' x 3' structural wire panel – 1 ea. (shown with trays attached)
6. Fastener hole layout template – 1 ea. (fasteners included)
7. Pre-cut empty sock mesh and media filler tube – 6 ea.



The Vertical Garden Rack:

The perfect way to mount our Varden Kit in small spaces where a wall mount is not desirable. Place this 2' wide x 5' tall free-standing rack anywhere and get growing..... accepts grow lighting and works with our **Varden** Trays and Sleeves!



Plant with Tropical or Edible Plants for Food, Beauty or Both!



Built to last for many years



Adjustable Height and Leveling

Varden trays and sleeves are built for growing **or** rotating-in “ready to harvest” plants into the holder system on a variety of schedules. **Vardening** allows customers to harvest their own fresh greens and herbs at time of need, increasing nutrition and reducing waste.



Indoor Varden with Herbs in Vardensok



Greens and Herbs in 12” long Vardensoks



Fast Start live plugs fully rooted and ready to plant into Vardensok or Ellepot for finish growth



Pre-cut empty mesh for filling 5” dia. X 24” Socks (included in kits)



120mm x 12” and 100mm x 10 Ellepots (tray or sleeve option)



Filled Vardensok in 12” length (or fully grown edible plants as re-supply option)

Choose the media carrier best suited to your needs

Soil Filled Vardensok at 12" or 24"



- Outdoor year-round gardening and living walls
- Option to self-fill
- Holds 3-6 plants per sock
- Multi-year planting plans for indoor living walls

Soil Filled Ellepots at 10" and 12"



- Single season gardening
- Indoor walls with short plant duration, holds 3 plants each in trays and 1 plant in sleeves
- Best for frequent rotation of planting designs or edibles

Fast Start Plants Delivery



- Year-round supply and re-supply of ready-to-harvest greens and herbs, as needed or by **subscription**
- For **eaters** and **harvesters** that want local, clean, fresh produce without being gardeners

Large Backyard Vertical Garden in California



As seen on HGTV's Rock the Block -Season 3





Varden Living Walls Vertical Farms Vertical Gardens

Hardware configurations and accessories for commercial, greenhouse and consumer use



[Visit Our YouTube Channel](#)